

# WISCONSIN

**9.2 HP GASOLINE  
DUAL FUEL, LPG &  
NG OPTIONS**

# AENL3

**YOUR  
HEAVY-DUTY  
SOURCE OF  
POWER**

Setting industry standards since 1909, Wisconsin continues to offer you a wide selection of air-cooled gasoline engines. Five models allow you to choose from single-cylinder, twin-cylinder and four-cylinder engines with power ranging from 7.0 to 65.9 HP.

## WISCONSIN CONSTRUCTION

Wisconsin Engines are designed for those tough applications that require durability and long life reliability. The multi-cylinder, v-block design offers unique side load capability for a wide variety of industrial applications.



## STANDARD FEATURES

- Single Cylinder
- Air-Cooled
- Forged-Steel Crankshaft with Tapered Roller Main Bearings
- Heavy-Duty Cast-Iron Block
- Forged Steel Connecting Rod
- Cast Iron Cylinders
- Centrifugal Flyweight Governor
- Aluminum Alloy Pistons
- Heat Resistant Alloy Steel Valves
- Replaceable Valve Guides
- Flywheel Magneto Ignition
- 1.7 Gallon Fuel Tank (6.4 Liters)

## WORLWIDE PARTS & SERVICE

We back our engines with a worldwide service network. Experienced Wisconsin representatives are always ready to meet your needs.



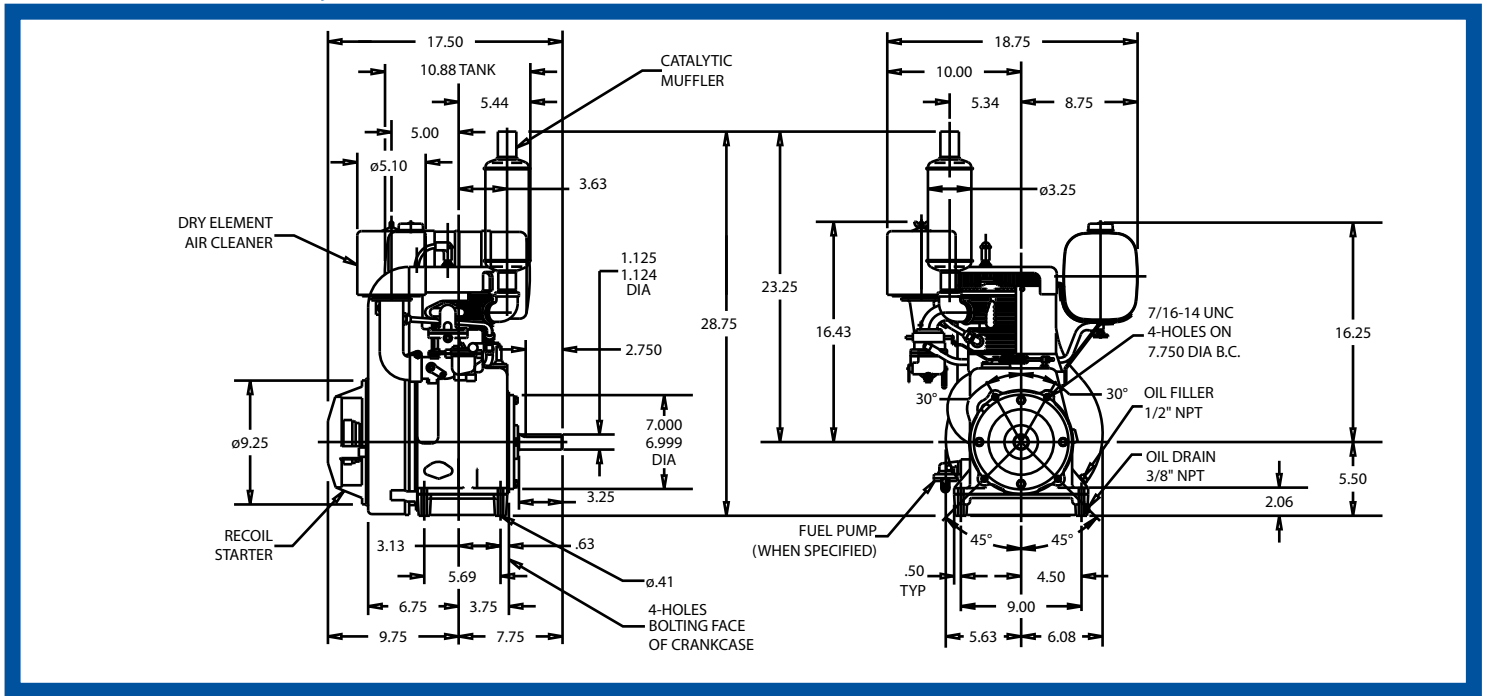
**WISCONSIN  
MOTORS, LLC**

# WISCONSIN

## 9.2 HP GASOLINE

## DUAL FUEL, LPG & NG OPTIONS

# AENL3



\* Net Weight Dry Standard Engine 110 lbs. (50 kg)

**Bore** ..... 3.00 in. (76 mm)  
**Stroke** ..... 3.25 in. (82.5 mm)  
**Displacement** ..... 23 cu. in. (377 cc)

| RPM  | HP  | KW  | TORQUE  |      |
|------|-----|-----|---------|------|
|      |     |     | Ft. lbs | Kg-m |
| 2000 | 6.1 | 4.6 | 16.0    | 2.22 |
| 2200 | 6.8 | 5.1 | 16.2    | 2.25 |
| 2400 | 7.4 | 5.5 | 16.2    | 2.24 |
| 2600 | 7.9 | 5.9 | 15.9    | 2.21 |
| 2800 | 8.5 | 6.3 | 15.9    | 2.20 |
| 3000 | 8.9 | 6.6 | 15.6    | 2.15 |
| 3200 | 9.2 | 6.9 | 15.1    | 2.09 |
| 3400 | 9.2 | 6.9 | 14.2    | 1.97 |
| 3600 | 9.2 | 6.9 | 13.4    | 1.86 |

### POWER OUTPUT

Maximum dynamometer net brake horsepower of the basic engine corrected to a pressure reading of 29.31 in. Hg (99 KPA) dry barometer and temperature of 77° F (25° C) when tested in accordance with SAE Test Code J1349. Engine output can be demonstrated within 5% at the factory under standard rating conditions. Power will decrease 3.5% for each 1000 ft. (305 M) above 500 ft. and 1% for each 10° F above standard temperature of 77° F (25° C). For continuous operation, applications should be limited to 80% of power shown.

### OPTIONS FOR EVERY NEED

- Heavy Duty Element Air Cleaner
- SAE Bell Housings & Drive Hubs
- Choice of Clutches, Clutch Reduction Take-Offs & Reducers
- Long Life Exhaust Valves & Inserts With Valve Rotators
- Multiple Crankshaft Configurations
- Electric Fuel Pump
- Large Capacity Fuel Tanks
- High-Temperature Safety Switch
- 12 volt, 25 amp Flywheel Alternator

\* Contact your Wisconsin Representative for Additional Options



# WISCONSIN MOTORS, LLC

SALES OFFICE:

2020 Fletcher Creek Dr. • Memphis, TN, 38133  
 Phone (901) 371-0353 • Toll Free 800-932-2858

[www.wisconsinmotors.com](http://www.wisconsinmotors.com)